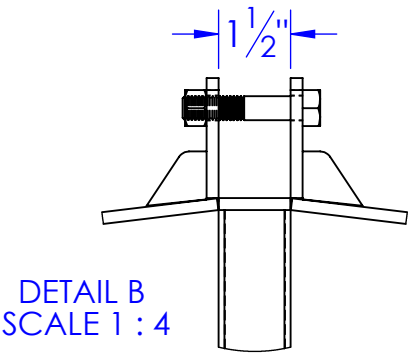
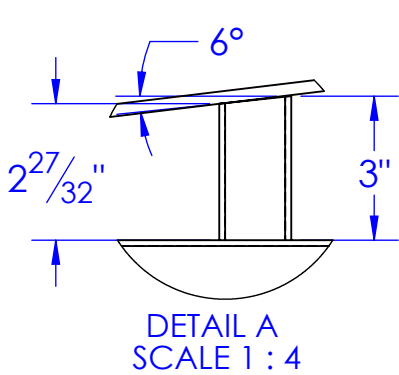
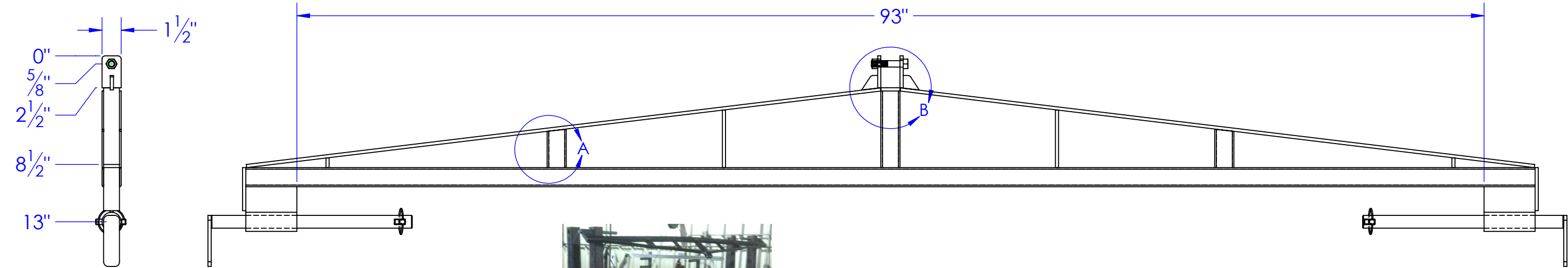
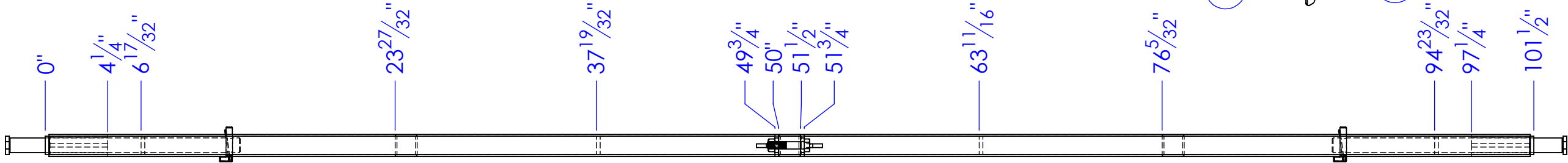
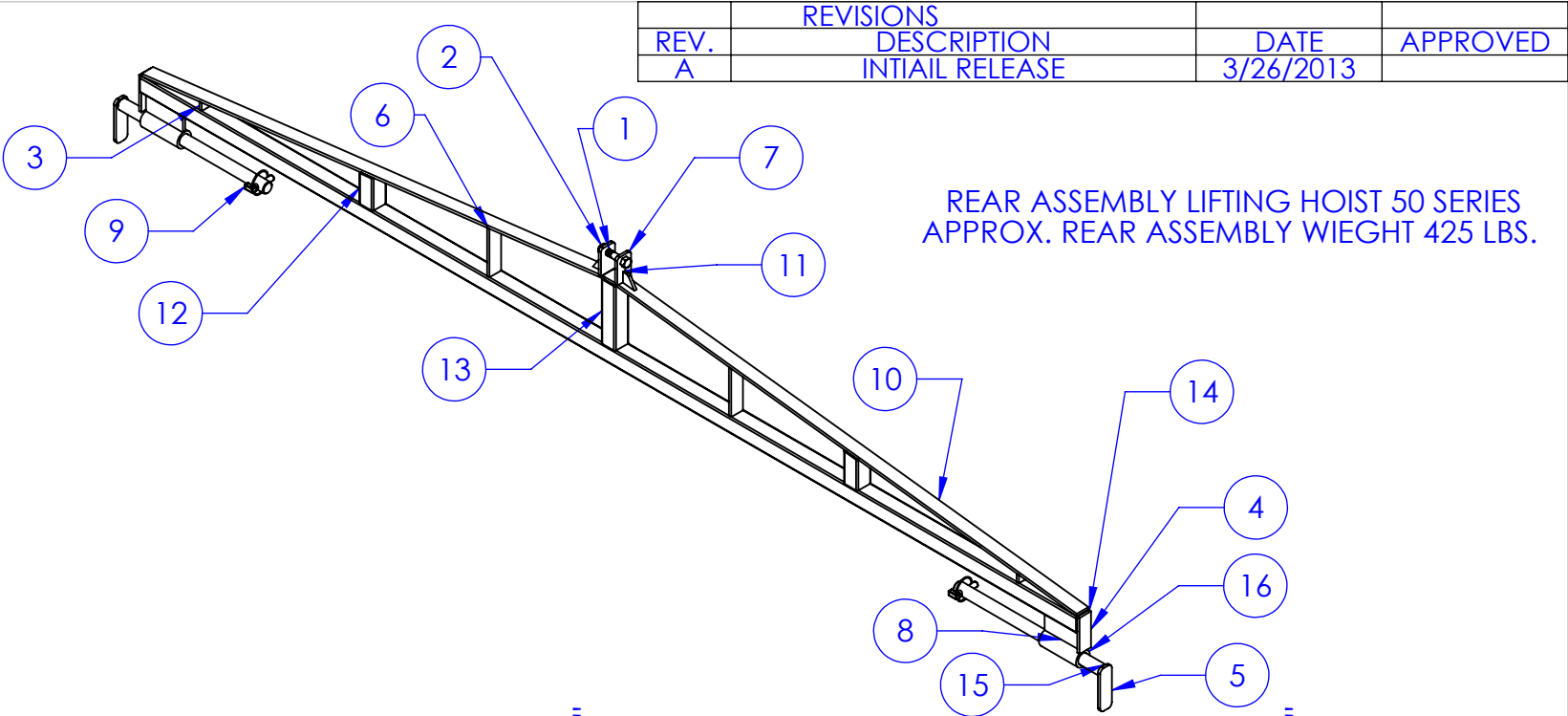


ITEM NO.	PART NUMBER	DESCRIPTION	MATERIAL	DRAWING #	QTY.
1	BO-1/2x2-1/2 HCS	BOLT 1/2x2-1/2		STOCK	1
2	BO-1/2 HNN	NYLON NUT 1/2		STOCK	1
3	FI .25 X 1.25 L .75	LENGTH: 3/4"	FI 1/4" x 1-1/4"	STOCK	2
4	FI .25 X 1.25 L 3.375	LENGTH: 3-3/8"	FI 1/4" x 1-1/4"	STOCK	2
5	FI .25 X 1.25 L 4 coped edges	LENGTH: 4"	FI 1/4" x 1-1/4"	STOCK	2
6	FI .25 X 1.25 L 4.5	LENGTH: 4-1/2"	FI 1/4" x 1-1/4"	STOCK	2
7	FI .25 X 1.5 L 2.5 with hole	LENGTH: 2"	FI 1/4" x 1-1/2"	STOCK	2
8	FI .25 X 2 L 4	LENGTH: 4"	FI 1/4" x 2"	STOCK	2
9	HD-PL .4375 HD	7/16 Lynch Pin.		STOCK	2
10	R&D top stringer	TOP STRINGER	ST-FI 1/4 x 1-1/4	STOCK	1
11	R&D top stringer gusset	TOP STRINGER GUSSET	1/4" HRS	95-1109	2
12	ST 1.5 x .120 L 3	LENGTH: 3"	ST 1-1/2 x 11 ga	STOCK	2
13	ST 1.5 x .120 L 6	LENGTH: 6"	ST 1-1/2 x 11 ga	STOCK	1
14	ST 1.5 x .120 L 101	LENGTH: 101"	ST 1-1/2 x 11 ga	STOCK	1
15	STC-CR 1x4142 L 15.75	LENGTH:15-3/4"	CF ANN 4142 1 RD	95-1109	2
16	ST-MT 1.500x1.032 L 4	LENGTH: 4"	ST-MT 1.500X1.032	STOCK	2



PROPRIETARY AND CONFIDENTIAL
THE INFORMATION CONTAINED IN THIS
DRAWING IS THE SOLE PROPERTY OF
<INSERT COMPANY NAME HERE>. ANY
REPRODUCTION IN PART OR AS A WHOLE
WITHOUT THE WRITTEN PERMISSION OF
<INSERT COMPANY NAME HERE> IS
PROHIBITED.

UNLESS OTHERWISE SPECIFIED:
DIMENSIONS ARE IN INCHES
TOLERANCES:
FRACTIONAL ±1/16
ANGULAR: MACH ± 1 BEND ±
TWO PLACE DECIMAL ±010
THREE PLACE DECIMAL ±005
MATERIAL
DO NOT SCALE DRAWING

	NAME	DATE	P.O. BOX 248, SABETHA KS. 66534 (785) 284-3674 FAX (785) 284-3931		
DRAWN	HEATH	3/26/2013	<div>TRIPLE C</div> <div>INC.</div>		
PART #					
ASM #	R&D REAR ASM HOIST				
COMMENTS: REAR ASSEMBLY LIFTING HOIST			SIZE B	DWG. NO. 95-1109	REV A
			SCALE: 1:8	WEIGHT: 43.13	SHEET 1 OF 1